



Epilepsy Society of Australia  
**25<sup>th</sup>**  
Annual Scientific Meeting

Registration Brochure

2-4 November 2011  
Brisbane Convention and Exhibition Centre

**IMPORTANT DATES**

**Abstract Submission Deadline**  
25 July 2011

**Authors Notified**  
Early September

**Early Bird Registration Deadline**  
21 September 2011

**ASSOCIATED MEETINGS**

**Australian and New Zealand Association  
of Neurologists EEG Course**  
31 October – 1 November 2011  
Royal Children's Hospital Brisbane



[www.sapmea.asn.au/esa2011/](http://www.sapmea.asn.au/esa2011/)



### Invitation

The Epilepsy Society is delighted to announce that Brisbane hosts our Annual Scientific Meeting this year. The evolution of Lennox-Gastaut syndrome will be addressed and is a highlight of the meeting providing participants with the latest information regards assessment and treatments. It is 15 years since our meeting introduced a number of "New Antiepileptic Drugs". The current position of these agents will be assessed from a personal viewpoint by an expert panel. The platform and poster presentations offer a stimulating opportunity to keep abreast of a wide range of research projects. We are pleased to invite your attendance,

Dan McLaughlin  
Meeting Chair

Andrew Bleasel  
President, Epilepsy society of Australia

### Local Organising Committee

Dan McLaughlin - Chair  
Andrew Bleasel – ESA President  
Simon Harvey  
Dean Jones  
Cecile Lander  
Kate Riney  
Meng Tan

### Brisbane Convention and Exhibition Centre (BCEC)

The Centre is located in the heart of Brisbane in a unique riverside cultural and entertainment precinct - home to Australia's newest and most celebrated Gallery of Modern Art.

The Brisbane Convention & Exhibition Centre is a world-class venue over three levels, purpose-built to provide superb flexibility and versatility under one roof. BCEC on Grey Street has been specifically designed for smaller and medium sized meetings for up to 600 delegates with an additional 19 meeting rooms and event spaces including two dedicated tiered auditoria.

Cnr Merivale and Glenelg Streets  
South Bank, Brisbane QLD  
Phone: +61 7 3308 3000

### Meeting Secretariat



U12, 202 Glen Osmond Road  
FULLARTON SA 5063  
Phone: +61 8 8274 6059  
Fax: + 61 8 8274 6000  
Email: [esa2011@sapmea.asn.au](mailto:esa2011@sapmea.asn.au)  
Web: [www.sapmea.asn.au/esa2011/](http://www.sapmea.asn.au/esa2011/)

### Sponsors

The Organising Committee is proud to acknowledge the support of our sponsors of the 25th Epilepsy Society of Australia's Annual Scientific Meeting.

#### **Principal Sponsor, Including Welcome Reception**



### Trade Exhibition

The Meeting Organising Committee will also be coordinating an Exhibition to run alongside the Meeting. The Exhibition will be held in Boulevard Auditorium Foyer. Morning teas, lunches and afternoon teas will be served in this area to enable you to visit all Exhibitors whose support of the Meeting is much appreciated.

### Exhibitors

Exhibitors to date include:

- Aurora BioScience
- Novartis Pharmaceuticals Australia
- sanofi-aventis Pty Ltd
- SciGen (Australia) Pty Ltd
- UCB Australia

### Exhibition Hours

Wednesday 2 November	1430 – 1830
Thursday 3 November	0800 – 1630
Friday 4 November	0800 – 1400

### International Keynote Speaker

**Professor Helen Cross** is the Prince of Wales's Chair of Childhood



Epilepsy at UCL-Institute of Child Health, Great Ormond Street Hospital for Children, London and the National Centre for Young People with Epilepsy, Lingfield, UK. She has research interests in early onset complex epilepsy, particularly outcomes and the role of intervention, including surgery and the ketogenic diet. She was Chair of the ILAE Commission for Paediatrics 2005-2009. She

is now Co-Chair of the Task Force of the Global Campaign and is a member of the ILAE Commission for European Affairs. She is also currently Clinical Advisor to the current review of the NICE guidelines for Epilepsy.



## 2nd Call for Abstracts

Abstracts are invited for oral and poster presentations on all aspects of clinical, basic science or allied health studies of epilepsy. If you wish to submit an abstract for consideration by the Scientific Committee, you must also intend to register for the Meeting.

## Abstract Submission

On-line submission is the only method of receipt of abstracts. Please visit the Meeting website [www.sapmea.asn.au/esa2011/](http://www.sapmea.asn.au/esa2011/) for more information regarding the format of abstracts. If you experience technical difficulties with on-line submission, please email your query to [abstracts@sapmea.asn.au](mailto:abstracts@sapmea.asn.au). Please submit your abstract no later than Monday 25th July 2011.



## Confirmation of Receipt of Abstracts

Immediately following submission, you will receive an acknowledgment email confirming receipt of your abstract, including a submission reference number. These details should be used if you wish to edit your abstract up to and no later than the submission deadline Monday 25th July 2011. No changes will be possible after this deadline.

## Presentation Format

The Scientific Committee reserves the right to decide the format of presentation on the basis of time and space available.



## Associated Meeting

Supported by UCB Australia



Australian & New Zealand Association of Neurologists EEG Course  
Date: Monday 31 October and Tuesday 1 November 2009  
Venue: Royal Children's Hospital Brisbane

Registration information will be sent to ANZAN Members separately.

The course is open to Neurology Trainees and Neurologists.

For further course information please contact:

Dr Nicholas Lawn

Email: [Nicholas.Lawn@health.wa.gov.au](mailto:Nicholas.Lawn@health.wa.gov.au) or

Dr John Dunne

Email: [jdunne@cyllene.uwa.edu.au](mailto:jdunne@cyllene.uwa.edu.au)

For enquiries regarding registration please contact:

**sapmea**



Phone: 08 8274 6059

Email: [eeg2011@sapmea.asn.au](mailto:eeg2011@sapmea.asn.au)

## Post-Meeting Symposium

### **Epilepsy: Top of Mind**

Date: Saturday 5 November 2011

Time: 0930 – 1530

Venue: Brisbane Convention and Exhibition Centre

Cost: Earlybird registration (before 30 September 2011)

- \$50 per person

Standard registration (after 30 September 2011)

- \$60 per person

(Fee includes morning tea and light lunch)

A one day symposium for people with epilepsy and their families as well as professionals working with people with epilepsy.

A range of topics will be covered including specialised streams for males, females parents of children with epilepsy as well as people living with tuberous sclerosis complex (in association with the Australian Tuberous Sclerosis Society).

*Presented by Epilepsy Action Australia.*

For further information including the program outline:

Visit: [www.epilepsy.org.au/our-services/upcoming-events](http://www.epilepsy.org.au/our-services/upcoming-events)

Phone: 1300 37 45 37

Email: [epilepsy@epilepsy.org.au](mailto:epilepsy@epilepsy.org.au)



**Social Program**

**Welcome Reception - Sponsored by UCB Pharma**



Date: Wednesday 2 November 2011  
Time: 1730 – 1830  
Venue: Boulevard Auditorium Foyer, Brisbane Convention and Exhibition Centre  
Cost: Inclusive for full registered delegates  
Additional Ticket: \$60.00  
Dress Code: Smart Casual  
An invitation is extended to all delegates to attend the Welcome Reception. This informal function will be a great opportunity to network with old friends and new acquaintances. Although this is an inclusive function, for catering purposes please indicate when registering if you will be attending.

**Meeting Dinner**

Date: Thursday 3 November 2011  
Time: 1900 – 2300  
Venue: South Bank River Room  
Cost: Inclusive for full registered delegates  
Additional Ticket: \$130.00  
Dress Code: Smart Business  
The Meeting Dinner will be a highlight of this year's social program and we hope all delegates will join us on this occasion to make it a memorable evening. Although this is an inclusive function, for catering purposes please indicate when registering if you will be attending.

**Committee Meetings**

**Wednesday, 2 November**

1130 - 1230 ESA Executive Committee Meeting  
1700 - 1800 Driving  
1700 - 1800 Drugs and Devices

**Thursday, 3 November**

0730 - 0830 International Affairs  
0730 - 0830 Education and Research  
1600 - 1700 Pregnancy Registry Advisory Board Meeting  
1730 - 1830 Annual General Meeting

**Friday, 4 November**

0800 - 0900 EpiNet Study Group (all welcome to attend)  
1230 - 1330 ENSIGA





## Preliminary Program

The preliminary program is correct at the time of printing, however, the Organising Committee reserves the right to alter the program if and as is deemed necessary.

### Wednesday 2nd November

All sessions will be held in the Boulevard Auditorium.

1130-1230	ESA Executive Committee Meeting	Meeting Room B1
<b>1300-1310</b>	<b>ESA Meeting Opening</b>	<b>Dr Andrew Bleasel</b>
<b>1310-1440</b>	<b>Lennox-Gastaut Syndrome, Evolution of a Syndrome</b> Limits of the Syndrome- History, Pathophysiology, Clinical Presentations Electroencephalogram Patterns Modern Brain Imaging	Prof Helen Cross Assoc Prof Lakshmi Nagarajan Dr John Archer
<b>1440-1500</b>	<b>Afternoon Tea</b>	<b>Boulevard Auditorium Foyer</b>
<b>1500-1600</b>	<b>Lennox-Gastaut Syndrome</b> Genetics of LGS Therapy of LGS	Prof Ingrid Scheffer Dr Deepak Gill
1600-1700	Platform Session One	
1700-1830	Poster Viewing	Boulevard Auditorium Foyer
1700-1800	Driving Committee Meeting	Meeting Room B1
1700-1800	Drugs and Devices Committee Meeting	Meeting Room B2
<b>1700-1830</b>	<b>Welcome Reception</b>	<b>Boulevard Auditorium Foyer</b>

### Thursday 3rd November

All sessions will be held in the Boulevard Auditorium.

0730-0830	International Affairs Committee Meeting	Meeting Room B1
0730-0830	Education and Research Committee Meeting	Meeting Room B2
<b>0900-1030</b>	<b>The Established Antiepileptic Drugs in 2011</b> Barbiturates Sulthiame & Acetazolamide Benzodiazepines Ethosuximide Phenytoin	Prof John Dunne Assoc Prof Cecilie Lander Assoc Prof Ernie Somerville Dr Andrew Bleasel Dr Nick Lawn
<b>1030-1100</b>	<b>Morning Tea</b>	<b>Boulevard Auditorium Foyer</b>
<b>1100-1230</b>	<b>The "New AEDs"—The Class of 1996 Reviewed</b> Felbamate & Vigabatrin Lamotrigine Gabapentin & Tiagabine Topiramate The 'New Comers' Lacosamide & Zonisamide Levetiracetam	Dr John Lawson Prof Mark Cook Prof Roy Beran Prof Terry O'Brien Dr Patrick Kwan Dr Joe Frasca
1230-1400	Poster Viewing	Boulevard Auditorium Foyer
<b>1230-1400</b>	<b>Lunch In Trade Exhibition Area</b>	<b>Boulevard Auditorium Foyer</b>
1400-1500	Platform Session Two	
<b>1500-1530</b>	<b>Afternoon Tea</b>	<b>Boulevard Auditorium Foyer</b>
1530-1700	Video EEG Session	Prof Sam Berkovic Assoc Prof Ernie Somerville
1600-1700	Pregnancy Registry Advisory Board Meeting	Meeting Room B1
1730-1830	Annual General Meeting	
<b>1900-2300</b>	<b>Meeting Dinner</b>	<b>South Bank River Room</b>

### Friday 4th November

All sessions will be held in the Boulevard Auditorium.

0800 - 0900	EpiNet Study Group (all welcome to attend)	Meeting Room B1
<b>0900-1100</b>	<b>Evolving Treatments of Epilepsy, When Medication fails</b> Brain Stimulation VNS Dietary Therapy Discussion	Prof Mark Cook Dr Kate Riney Prof Helen Cross
1025-1055	The Peter Bladin Historical Lecture Sir William Gowers	Prof Anne Scott
1055-1100	Award presentations	
<b>1100-1130</b>	<b>Morning Tea</b>	<b>Boulevard Auditorium Foyer</b>
<b>1130-1330</b>	<b>Neuro-inflammation and Seizures</b> Autoimmune Epilepsy Immunotherapy Rasmussen's Syndrome Post Encephalitic Epilepsies	Assoc Prof Russell Dale Dr Steve Reddell Dr Stephen Malone Dr Simon Harvey
1230-1330	ENSIGA Committee Meeting	Meeting Room B1
<b>1330</b>	<b>Meeting Close and Farewell Lunch</b>	

## General Information

### **Air access - direct and convenient**

Brisbane's domestic and international airports are located just 25 minutes drive from the City centre in what is rapidly becoming a global Airport City of trade and commerce.

Brisbane's Airtrain delivers delegates direct into the city centre and convention precinct.



### **Travel & transport options**

The Centre's central city location is convenient for visitors with easy and direct access to an efficient citywide transport network of buses, trains, taxis and the river's high-speed regular catamaran service.

- The City's international and domestic airports are only a 25 minute taxi ride from the city centre and the Convention Centre.
- The city to airport Air Train and City Train operate from the South Brisbane train station, adjacent to the Convention Centre.
- There are two bus stations within the South Bank Precinct and a drop off bay alongside the Centre is available for chartered coaches.
- Queensland's Go Card enables seamless travel across bus, train and ferry services and is readily available at newsagents, convenience stores and stations
- There is a dedicated taxi rank located at the Centre's Main Entrance

### **Car Parking**

The Centre provides undercover parking for 1500 vehicles, with direct lift access to the Centre's convention and exhibition facilities.

Monday – Sunday: Flat rate of \$14.00

- 24 hour undercover parking
- On site Car Park Manager
- On site security
- Auto pay machines located on Exhibition Concourse, Foyer Level and at exit of car park
- Exit booths are manned during operational hours and during events.
- Visa and Mastercard are accepted at manned exit booths
- Specially designated accessible parking bays for disabled located next to lifts for easy access

### **Business Services Centre**

The Centre offers a wide range of client, business, exhibition and event related services and provides general information for visitors to the Centre.

A dedicated Client and Visitors' Services Centre is located in the Centre's Main Foyer and incorporates a permanent registration desk, information desk, client IT area, cloakroom, box office and client store room.

### **Catering**

Morning and afternoon teas, lunches and the Welcome Reception are included in the full registration fee. They will be served in the Boulevard Auditorium Foyer each day. Nametags must be worn to enter this area. The Meeting Dinner is also included in the full registration fee and will be held at the South Bank River Room. Entry tickets will be given for the Meeting Dinner with your registration pack.

### **Dietary needs**

Should you require any special catering arrangements to be made on your behalf, please include a notation on your registration form.

### **Facilities for people with disabilities**

Please indicate on your registration form if you require disabled facilities.

### **Liability disclaimer**

In the event of industrial disruption or other unforeseen circumstances, meeting organisers accept no responsibility for loss of monies or goods incurred by delegates.

### **Nametags & Tickets**

Nametags and delegate satchels will be provided at the Registration Desk located in the Boulevard Auditorium Foyer on Boulevard Level of the Brisbane Convention and Exhibition Centre. Admission to all sessions, morning and afternoon teas, lunches and Welcome Reception is by nametag only. Entry tickets will be given for the Meeting Dinner.

### **No smoking policy**

Delegates should be aware that smoking is banned in public buildings and many hotels and restaurants throughout Australia, including the meeting venue.



## Registration Information

**The preferred method of registering is on-line via the Meeting website:**  
**<http://www.sapmea.asn.au/esa2011/>**

### **How to register**

You will be required to create an account for yourself using your email as a login and creating a unique password, or use an existing account already created. This will allow you to access your registration details in case you need to make changes to your personal or registration details in the future. Please remember your password.

### Registration Fees

All fees are quoted in Australian dollars (inclusive of GST). Registration cannot be confirmed until full payment is received.

<b>Registration Type</b>	<b>Early Bird On or Before 21 Sep</b>	<b>Late After 22 Sep</b>
ESA Member *	\$545.00	\$595.00
Non Member	\$710.00	\$760.00
Special Groups Member **	\$450.00	\$500.00
Special Groups Non Member **	\$533.00	\$583.00
Full Time Student ***	\$340.00	\$390.00
Day Registration Member	\$250.00	\$250.00
Day Registration Non Member	\$270.00	\$270.00

\*The ESA Member rate applies to delegates who are financial ESA Members for the 2011/2012 membership period. You may join the ESA at the time of registration to obtain the member rate.

\*\*\*Special Groups' include Neurology Trainees Technical Staff, Nurses and Allied Health Professionals. Please provide a letter of verification with your completed registration form.

\*\*\*Students should provide a letter from their Educational Institutions confirming their status as a full time student. Please fax evidence of your student status to the Meeting Secretariat on +61 8 8274 6000.



### Method of Payment

Payment of fees (in full) must accompany all registration forms. No registration will be confirmed until payment is received. Payment can be made by the following 3 methods:

1. EFT

By electronic funds transfer to sapmea's nominated account. Details will be provided on the tax invoice upon registration.

2. Credit Cards

Visa, Mastercard, AMEX and Diners. Please note credit card payments will be listed as a transaction with sapmea on your credit card statement.

3. Personal or Company cheque

Australian delegates only. Cheques should be made payable to sapmea.

### **Confirmation & Receipt**

Once your registration has been processed you will automatically receive a confirmation email. Please bring this letter with you to the on-site registration desk.

### **Cancellations**

Should you experience any problems with the online registration process please contact the Meeting Secretariat on +61 8 8274 6042.

Cancellations received in writing at the secretariat prior to Friday 30 September 2011 will receive a refund of fees, less an administrative fee of \$110. No refund will be issued after this date. Substitute delegates are welcome, please advise the name of the new delegate so name badges can be amended.



Accommodation

Rooms have been reserved for ESA 2011 ASM registrants at special group rates at the following properties. Accommodation bookings for the following rates can only be booked through sapmea. To secure your booking you are required to provide credit card details or full prepayment of accommodation which will be given to the hotel of your choice. Availability of accommodation cannot be guaranteed after Friday 30th September 2011, unless sold out prior. Rates quoted are per room per night for up to 2 people using existing bedding (unless otherwise indicated). Rates include GST and do not include Breakfast.

Rydges South Bank ★★★★★☆

Cnr Grey & Glenelg Streets, South Bank – Attached to Meeting venue



Rydges South Bank adjoins with the Brisbane Convention & Exhibition Centre (BCEC) via a walkway. The hotel offers two bars and two restaurants, 304 guest rooms with broadband internet, cable TV, individually controlled air-conditioning along with 24-hour room service and reception services as well as complimentary gymnasium, sauna and spa to all hotel guests.

Room Type	Bedding	Conference Rate
Queen Room	1 Queen	\$239
Twin Room	2 Doubles	\$239
Superior Queen Room	1 Queen	\$269

**Breakfast price:** Full Buffet Breakfast \$25 per person  
**Additional person:** \$60.00 per night  
**Cancellations** received between 30 - 14 days prior to arrival will incur a cancellation fee of one nights accommodation.  
**Cancellations or nights reduced** within 14 days of arrival will be fully non refundable

Early and Late Check-in

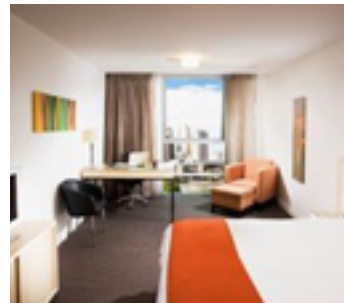
The check-in and out times for your hotel will be displayed on your confirmation letter. If you wish to be guaranteed earlier access to your room, you will need to make your booking from the night before. Please indicate if you will be arriving at your hotel after 6.00pm. Failure to do so may mean your room will be released.

Change or cancellation of Booking

Due to the nature of group bookings any booking changes or cancellations must be made in writing to sapmea and NOT directly to the hotel.  
 \*Breakfast can be booked direct with the hotels upon check-in. Photos of room types are examples and may not reflect the end product. Please let sapmea know at the time of booking accommodation if you require extra bedding at the additional person rate.

Mantra South Bank ★★★★★

161 Grey Street South Bank – 3 minute walk to Meeting venue



Mantra South Bank is conveniently located on Grey Street, opposite the Brisbane Convention & Exhibition Centre. All rooms have been stylishly designed to offer guests maximum comfort and feature air-conditioning, mini-bar, plunger coffee & tea making facilities, direct-dial ISDN telephones, voice-mail, broadband internet

access, LCD televisions and DVD player, in-house movies and personal in-room safes. All apartments also feature fully equipped kitchens, laundry facilities and private balconies, some with city views. The property offers guests an array of professional services and facilities including a 24 hour reception desk, 24 hour concierge, 24 hour room service, on site Stone Restaurant & Bar, gym, pool and spa.

Room Type	Bedding	Conference Rate
Studio Room	1 Queen	\$240
1 Bedroom Apartment	1 Queen or 2 Singles	\$285
2 Bedroom Apartment	2 Queens or 1 Queen & 2 Singles	\$474(4 guests)

**Breakfast price:** Full Buffet Breakfast \$22 per person  
**Additional person:** \$40.00 per night  
**Cancellations or nights reduced** within 30 days of arrival will incur a cancellation fee of one nights accommodation.  
**Cancellations or nights reduced** within 48 hours prior to check-in will be fully non-refundable.

Parkview Apartments SELF RATED

41 – 49 Russell Street, South Brisbane – 10 minute walk to Conference venue



The Parkview Apartments offer guests facilities including the guest laundry, swimming pool and spa, underground secure car parking and a shaded BBQ area. The Apartments feature kitchenettes including fridge, microwave, hotplate and toaster, 10 Foxtel channels, reverse cycle air-conditioning and private

balconies which overlook the city, parks and gardens or the landscaped gardens and pool area.

Room Type	Bedding	Conference Rate
Studio Apartment	1 King or 2 Singles	\$150
One Bedroom Apartment	1 King or 2 Singles	\$170

**Additional person:** Not available  
**Cancellations** received between 30 - 14 days prior to arrival will incur a cancellation fee of one nights accommodation.  
**Cancellations or nights reduced** within 14 days of arrival will be fully non refundable